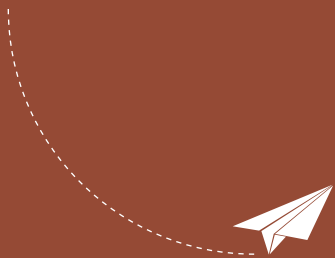




The Sip Guidebook

城市微醺指南





Taking from Sukhothai heritage
each cocktail is inspired by a traditional dish from Thailand, Italy and China,
married with modern techniques to create a new journey of tipsy

秉承素凯泰文化基因
以各国地标城市菜肴为灵感，
结合风尚创意，打造全新的微醺之旅



Massaman Curry x Piña Colada
马斯曼咖喱 x 椰林飘香



Havana Club 3yr rum, Olmeca Altos Plata,
tamarind, spices, lemongrass, peanut, pineapple
哈瓦纳俱乐部 3 年朗姆酒, 奥美加阿特兹银标龙舌兰酒,
罗望子, 香料, 柠檬草, 花生, 菠萝

158

all prices are in RMB and inclusive of service charge and VAT

以上价格均为人民币, 并已含服务费及增值税

This cocktail menu is crafted by SG Group

该酒单由 SG Group 倾情出品

Som Tam (Papaya Salad) x Pegu Club
 绿木瓜沙拉 x 勃固俱乐部



The Botanist Gin, Cointreau, citrus,
 papaya, chili, bitters
 植物学家金酒, 君度力娇酒, 柠檬,
 青木瓜, 辣椒, 苦精

138

Tom Kha Gai x Gibson Martini
 椰奶鸡汤 x 吉布森



London No.3 Gin, vermouth, coconut,
 cilantro, kaffir lime, galangal
 英伦3号金酒, 味美思, 椰子,
 黄菜, 柠檬叶, 高良姜

128

all prices are in RMB and inclusive of service charge and VAT
 以上价格均为人民币, 并已含服务费及增值税
 This cocktail menu is crafted by SG Group
 该酒单由 SG Group 倾情出品

Parmigiana x Bloody Mary
茄子通心粉 x 血腥玛丽



Absolut Vodka, The SG Shochu KOMÉ,
eggplant, tomato, Parmigiano Reggiano, basil
绝对伏特加, 爱侍基大米烧酒, 茄子, 番茄,
帕米加诺 - 雷加诺, 罗勒叶

128

Carbonara x Negroni
卡邦尼意面 x 尼格罗尼



Beefeater Gin, vermouth, campari, Pecorino
Romano, peppercorn, guanciale
必富达金酒, 红味美思, 金巴利,
佩克利诺·罗马羊奶酪, 花椒, 风干猪面颊肉

158

Tiramisu x Espresso Martini
提拉米苏 x 咖啡马提尼



Havana 7yr Rum, The SG Shochu IMO,
espresso, cacao, Mascarpone,
KOKUTO DE LEQUIO
朗姆酒, 爱侍基甘薯烧酒, 咖啡, 可可,
马斯卡邦尼奶酪, 琉球黑糖利口酒

128

Sgroppino x Caprese Salad
卡普雷塞沙拉 x 斯格罗皮诺



Lemon Sorbet, The SG Shoshu MUGI, pisco,
mozzarella, tomato, basil, prosecco
柠檬雪泥, 爱侍基大麦烧酒, 皮斯科酒,
马苏里拉奶酪, 番茄, 罗勒叶, 汽泡酒

***upgrade to Champagne 198**

升级至香槟 198

128

all prices are in RMB and inclusive of service charge and VAT

以上价格均为人民币, 并已含服务费及增值税

This cocktail menu is crafted by SG Group

该酒单由 SG Group 倾情出品

Drunken Chicken x Bamboo

醉鸡 x 翠竹



White pepper, The SG Shochu KOMÉ,
Shao xing yellow wine, scallion, red dates

白胡椒, 爱侍基大米烧酒,
绍兴黄酒, 葱, 红枣

138

Stuffed Lotus Root with Sticky Rice x Old Fashioned

糯米莲藕 x 古典鸡尾酒



Buffalo Trace Bourbon, The SG Shochu IMO,
Shao xing yellow wine, osmanthus, honey

波本威士忌, 爱侍基甘薯烧酒,
绍兴黄酒, 桂花, 蜂蜜

138

all prices are in RMB and inclusive of service charge and VAT

以上价格均为人民币, 并已含服务费及增值税

This cocktail menu is crafted by SG Group

该酒单由 SG Group 倾情出品

Xiao Long Bao x Manhattan
小笼包 x 罗布·罗伊



Naked Malt, vermouth, The SG Shoshu MUGI,
bitters, consommé, XLB sauce
裸雀混合麦芽威士忌，味美思，
爱侍基大麦烧酒，“清汤”，姜醋

158

Hong Shao Rou x 3 Dots & a Dash
红烧肉 x 三点一线



Blend of rums, five spice, The SG Shochu KOMÉ,
citrus, pineapple, hongshao honey, bitters
调和朗姆酒，五香，爱侍基大米烧酒，柠檬，菠萝，
红烧蜜，芳香苦精

138

Mountain
山脉



Everleaf Mountain, basil,
strawberry, balsamic, grapefruit
永恒之葉 山韻，罗勒叶，
草莓，意大利香醋，西柚

108

all prices are in RMB and inclusive of service charge and VAT

以上价格均为人民币，并已含服务费及增值税

This cocktail menu is crafted by SG Group

该酒单由 SG Group 倾情出品

Ocean
海洋



Everleaf Marine, buckwheat,
gooseberry, mint, yuzu
永恆之葉 海韻, 苦荞茶,
油柑汁, 薄荷, 日本柚子

108

Garden
花园



Seedlip Garden, citrus, pineapple,
pandan, coconut
斯柏108烈酒风味饮料, 柠檬,
菠萝, 斑斓叶, 椰子

108

all prices are in RMB and inclusive of service charge and VAT
以上价格均为人民币, 并已含服务费及增值税
This cocktail menu is crafted by SG Group
该酒单由 SG Group 倾情出品

Tom Yum Sukhothai Signature Cocktail
经典冬阴功



Vodka, lemon juice, lemongrass, lime leaves, galangal, chilli
伏特加, 柠檬汁, 柠檬草, 青柠叶, 高良姜, 辣椒

128

all prices are in RMB and inclusive of service charge and VAT
以上价格均为人民币, 并已含服务费及增值税

so much world
so little time

inspired by city memories
a unique journey for you to experience
through the flavours, aroma and sensation

世界那么大
时间那么少

搜罗全球地域记忆
「城市旅行指南」为您呈现一段奇特的旅程
尽享目的地
味道、香气和感官体验



Gin

金酒

	glass/ 杯	bottle/ 瓶
kinobi kyoto dry gin 季之美手工金酒	118	1,688
le tribute 献礼金酒	108	1,588
9'vine flouraison 纪凡花果香配制酒	98	1,488
g'vne nouaison 纪凡杜松香蒸馏酒	98	1,488
le gin Christian Drouin 乐金克里斯蒂金酒	108	1,588
berliner 柏林蒸馏者干金酒	98	1,488
monkey47 猴王 47 黑森林金酒	98	1,488
kapriol grapefruit & hibiscu 卡比奥西柚玫瑰茄金酒	88	1,388
lind & lime 林德菜姆金酒	98	1,488
white sheep 新西兰白绵羊金酒	98	1,488
meyer's gold 梅耶金标杜松子酒	98	1,488

all spirits pours are 40ml per glass 每杯烈酒净含量为 40 毫升

all prices are in RMB and inclusive of service charge and VAT
以上价格均为人民币，并已含服务费及增值税

whisky

威士忌

	glass/ 杯	bottle/ 瓶
Japan 日本		
hibiki japanese harmony 響和风醇韵调和型威士忌	258	3, 888
amahagan red wine cask 长滨纯麦威士忌红酒桶	158	2, 588
amahagan yamazakura cask 长滨纯麦威士忌浪漫樱花桶	158	2, 588
matsui single malt peated 松井泥煤味单一麦芽	108	1, 788
matsui single malt sakura cask 松井樱花桶单一麦芽	108	1, 788
hakushu1973 白州 1973 单一麦芽威士忌	N	2, 988
hakushu 12y 白州 12 年单一麦芽威士忌	N	6, 888
yamazaki1923 山崎 1923 单一麦芽威士忌	N	4, 288
yamazaki 12y 山崎 12 年单一麦芽威士忌	N	6, 888
yamazaki 18y 山崎 18 年单一麦芽威士忌	N	17, 888

all spirits pours are 40ml per glass 每杯烈酒净含量为 40 毫升

all prices are in RMB and inclusive of service charge and VAT
以上价格均为人民币, 并已含服务费及增值税

single malt whisky

苏格兰单一麦芽威士忌

	glass/ 杯	bottle/ 瓶
lagavulin 16y 乐加维林 16 年单一麦芽威士忌	118	1, 688
ardbeg corrywreckan 阿贝漩涡族单一麦芽威士忌	188	2, 588
ardbeg uigedail 阿贝乌干达单一麦芽威士忌	158	2, 388
talisker 10y 泰斯卡 10 年单一麦芽威士忌	98	1, 388
talisker 18y 泰斯卡 18 年单一麦芽威士忌	228	3, 588
dalmore 12/ 大摩 12 年单一麦芽威士忌	128	1, 888
macallan 12y 麦卡伦 12 年单一麦芽威士忌	128	1, 888
the balvenie 12y 百富 12 年单一麦芽威士忌	128	1, 888
the balvenie 14y 百富 14 年单一麦芽威士忌	228	3, 288
the glenlivet 12y 格兰威特 12 年单一麦芽威士忌	98	1, 688

all spirits pours are 40ml per glass 每杯烈酒净含量为 40 毫升

all prices are in RMB and inclusive of service charge and VAT
以上价格均为人民币，并已含服务费及增值税

bourbon

波本威士忌

	glass/ 杯	bottle/ 瓶
make's mark 美格波本威士忌	98	1, 488
michter's bourbon 酪帝诗波本威士忌	98	1, 488

cognac

干邑白兰地

hennessy XO 轩尼诗 XO 干邑白兰地	288	4, 288
martell cordon bleu 马爹利蓝带干邑白兰地	288	4, 288
remy martin XO 人头马 XO 干邑白兰地	288	4, 288

vodka

伏特加

belvedere 雪树伏特加	98	1, 488
grey goose 灰雁伏特加	98	1, 488

all spirits pours are 40ml per glass 每杯烈酒净含量为 40 毫升

all prices are in RMB and inclusive of service charge and VAT
以上价格均为人民币，并已含服务费及增值税

rum

朗姆酒

	glass/ 杯	bottle/ 瓶
havana 7y 哈瓦那俱乐部7年陈年朗姆酒	88	1, 288
diplomatico reserve 外交官珍藏朗姆酒	98	1, 488

tequila

龙舌兰酒

patron silver 培恩银樽龙舌兰酒	108	1, 688
------------------------	-----	--------

beer

啤酒

Tsing tao(280ml) 青岛啤酒 280 毫升	68	N
Asahi(330ml) 朝日啤酒 330 毫升	68	N
Asahi draft beer(500ml) 朝日生啤 500 毫升	80	N

all spirits pours are 40ml per glass 每杯烈酒净含量为 40 毫升

all prices are in RMB and inclusive of service charge and VAT
以上价格均为人民币，并已含服务费及增值税



The Sukhothai Shanghai

上海素凯泰酒店

380 Weihai Road, 200041 Shanghai, PR China

中国上海 威海路380号 邮编: 200041

Te电话:(8621)5237 8888

www.sukhothai.com